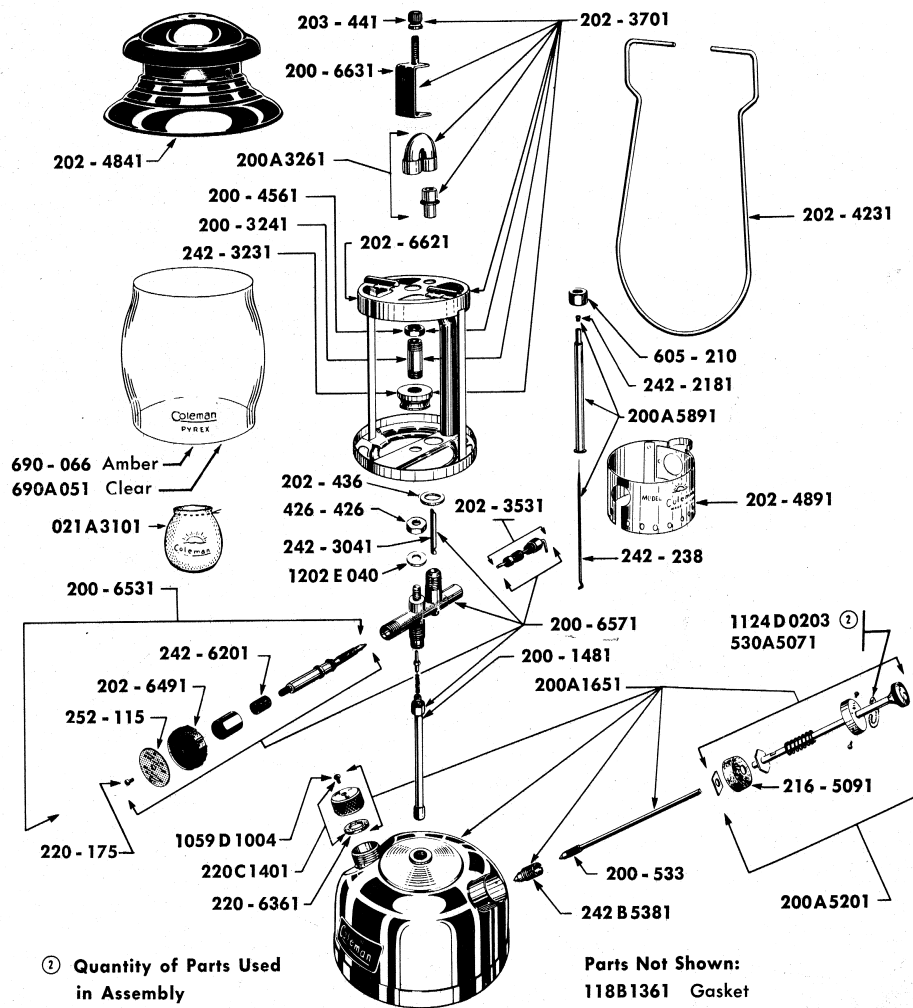
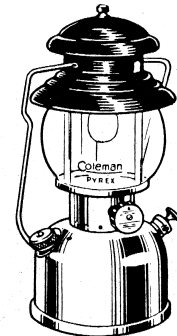


202INSTANT LIGHT GASOLINE
SINGLE MANTLE

COLEMAN LANTERNS

LANTERNS② Quantity of Parts Used
in AssemblyParts Not Shown:
118B1361 Gasket

MODEL 202 SHOWN

Model 202
(Discontinued)

| MODEL | FINISH | |
|-------|--------|---------------------------|
| | Fount | Ventilator (Porcelain) |
| 202 | Nickel | Green (5½") |

| PART NO. | DESCRIPTION | USED ON | PART NO. | DESCRIPTION | USED ON |
|------------|--|---------|------------|---|---------|
| 021A3101 | 021A Mantle | | 202 - 6621 | Frame | |
| 118B1361 | Filler Cap Gasket (Used only with obsolete 220B1401) | | 202 - 6631 | Ventilator Bracket — Replaced by 200-6631 | |
| 200 - 1481 | Tube Ass'y (Fuel and Air) | | 203 - 441 | Ball Nut | |
| 200 - 3241 | Burner Tube | | 216 - 5091 | Pump Cup | |
| 200 - 4561 | Lock Nut (½" — 32 Hex, Brass) | | 220 - 175 | Self Tapping Screw (#4—40 x 5/16") | |
| 200 - 533 | Air Stem (Can be used for 242B532) | | 220 - 6361 | Filler Cap Gasket and Disc Ass'y (May be used as replacement on all Filler Caps.) | |
| 200 - 6531 | Valve Stem Ass'y | | 220C1401 | Filler Cap Complete | |
| 200 - 6571 | Fuel Valve Complete (Less Generator) | | 242 - 2181 | Gas Tip (Marked 6") | |
| 200 - 6631 | Ventilator Bracket | | 242 - 238 | Needle Ass'y | |
| 200A1651 | Fount Complete | | 242 - 3041 | Eccentric Block | |
| 200A3261 | "U" Tube and Venturi | | 242 - 3231 | Burner Cap and Screen | |
| 200A5201 | Pump Plunger Ass'y | | 242 - 6201 | Valve Stem Packing | |
| 200A5891 | T66DL Generator | | 242B532 | Air Stem — Replaced by 200-533 | |
| 202 - 1651 | Nickel Fount — Replaced by 200A1651 | | 242B5381 | Check Valve | |
| | Red Fount | | 252 - 115 | Direction Disc | |
| 202 - 3531 | Tip Cleaner Stem | | 426 - 426 | Palnut (¼" — 20) | |
| 202 - 3701 | Burner Ass'y Complete | | 530A5071 | Pump Cap Clip | |
| 202 - 4231 | Bail | | 605 - 210 | Jamb Nut | |
| 202 - 436 | Frame Washer (3/8" x 5/8" x 1/4" Stnls. Steel) | | 690 - 066 | 550A Amber Pyrex Globe — Accessory | |
| 202 - 4841 | Ventilator | | 690A051 | 550 Clear Pyrex Globe | |
| 202 - 4891 | Globe Base Rest | | 1059D1004 | Machine Screw (10—32 x 1/4" Rd. Hd. Nickel Plated Br.) | |
| 202 - 6491 | Valve Wheel | | 1124D0203 | Sheet Metal Screw (#2 x 3/16" Type Z, Bd. Hd.) (Used on earlier models) | |
| 202 - 6531 | Stem Ass'y — Replaced by 200-6531 | | 1202E040 | Washer (5/8" O. D. x 9/32" I. D. x 1/16" Stnls. Steel) | |
| 202 - 6571 | Fuel Valve Complete — Replaced by the 200-6571 | | | | |