

repair parts

CAUTION

NOT OVERFILL LANTERN. The lantern should sit level all during filling to maintain air level in tank. Overfilling will cause excessive flaming of lantern.

OPEN FUEL VALVE ONE-FOURTH TURN TO LIGHT.

Opening valve more than one-fourth turn to light will cause excessive flaming and possible explosion.

NEVER OPEN FILLER CAP WHEN LANTERN IS BURNING...

is near open flame...or is near excessive heat.

ALWAYS WIPE OFF FUEL THAT WAS SPILLED DURING THE FILLING PROCESS BEFORE LIGHTING LANTERN.

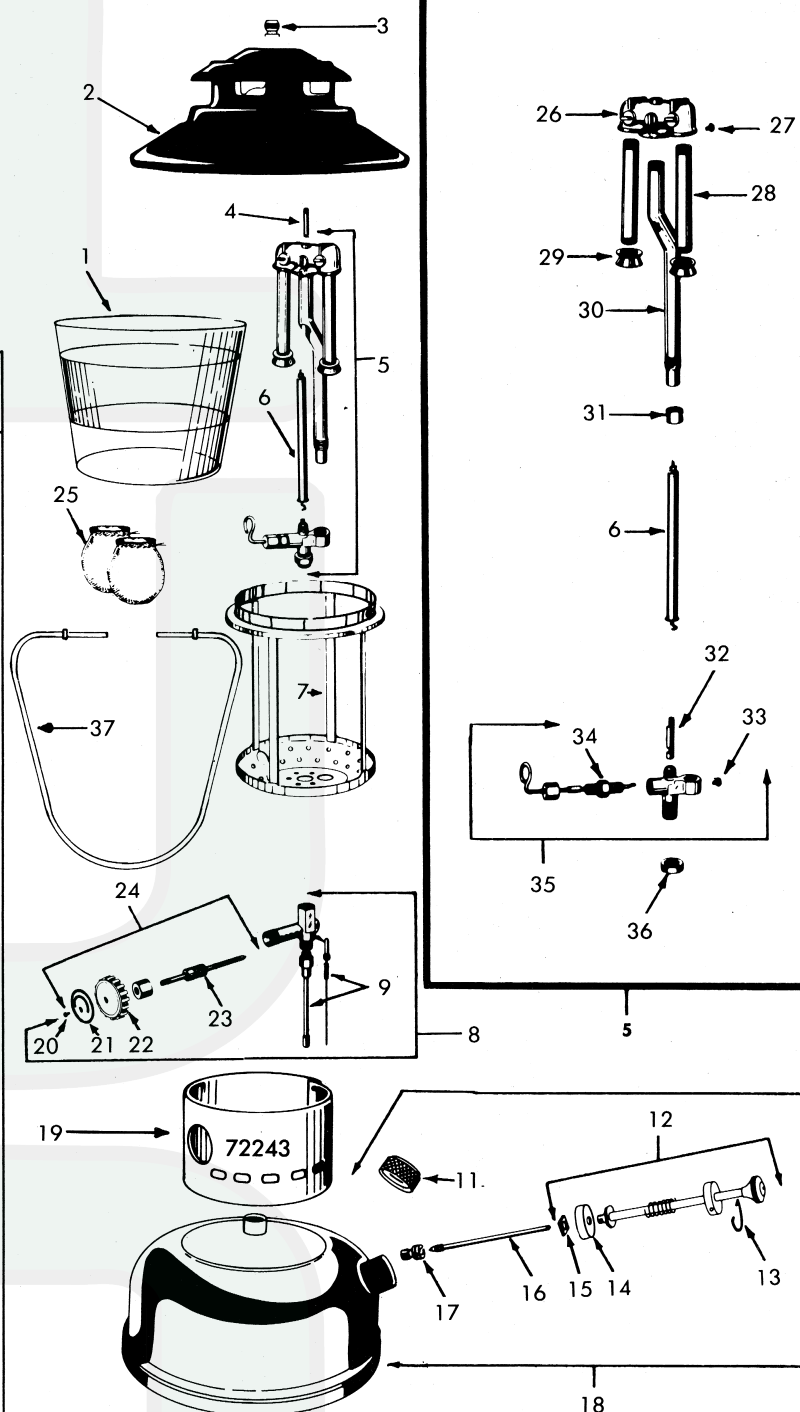
MODEL NO. 476.72243

Key No.	Part No.	Description
SEE BACK PAGE FOR ORDERING INFORMATION		
*1.	261-0481	Globe
2.	261C4851	Ventilator
3.	203-441	Ball Nut
4.	220B340	Vent Rod
5.	220D3991	Burner Ass'y
*6.	260-5891	(or 220E5891) Generator
7.	261-4981	Frame Ass'y
8.	260A6571	Valve Complete
9.	260-1461	Fuel and Air Tube Ass'y
10.		Deleted
11.	220C1401	Filler Cap Complete
12.	242D5201	Pump Plunger Ass'y
13.	530A5071	Pump Cap Clip
14.	216-5091	Pump Cup
15.	242-1071	Push-On Nut
16.	200-533	Air Stem
17.	242B5381	Check Valve
18.	260B1651	Fount Complete
19.	261C4291	Base Rest
20.	220B175	Self-Tapping Screw
21.	260-119	Direction Disc
22.	407-6491	Valve Wheel
23.	118B6201	Valve Stem Packing
24.	260A6531	Valve Stem Ass'y
*25.	21A340	(or 21A3101) Mantle
26.	220B3261	Mixing Chamber
27.	1189D0604	Self-Tapping Screw
28.	101-324	Burner Tube
29.	220-5231	Burner Cap and Screen
30.	220B3221	Air Intake Tube
31.	605-210	Jamb Nut (Generator)
32.	118A3041	Eccentric Block
33.	1189D0605	Self-Tapping Screw
34.	220B3531	Tip Cleaner Stem
35.	220B3571	Cleaner Ass'y
36.	104-147	Nut
37.	261-4231	Bail
	1960A235	Customers Instructions Manual

* CATALOG ITEMS

25.	72234	Globe
	72227	Generator
	72225	Mantle

*These parts available through your Sears retail store or catalog sales office.



GUARANTEE

This Sears Lantern is guaranteed for one year from date of purchase against mechanical defect. Fouled or damaged generator not included.

SEARS, ROEBUCK AND CO.
Chicago, Illinois 60607