

REPLACEMENT PARTS

The Model Number will be found on the label located on the front of the stove. Always mention the Model Number when requesting service or repair parts.

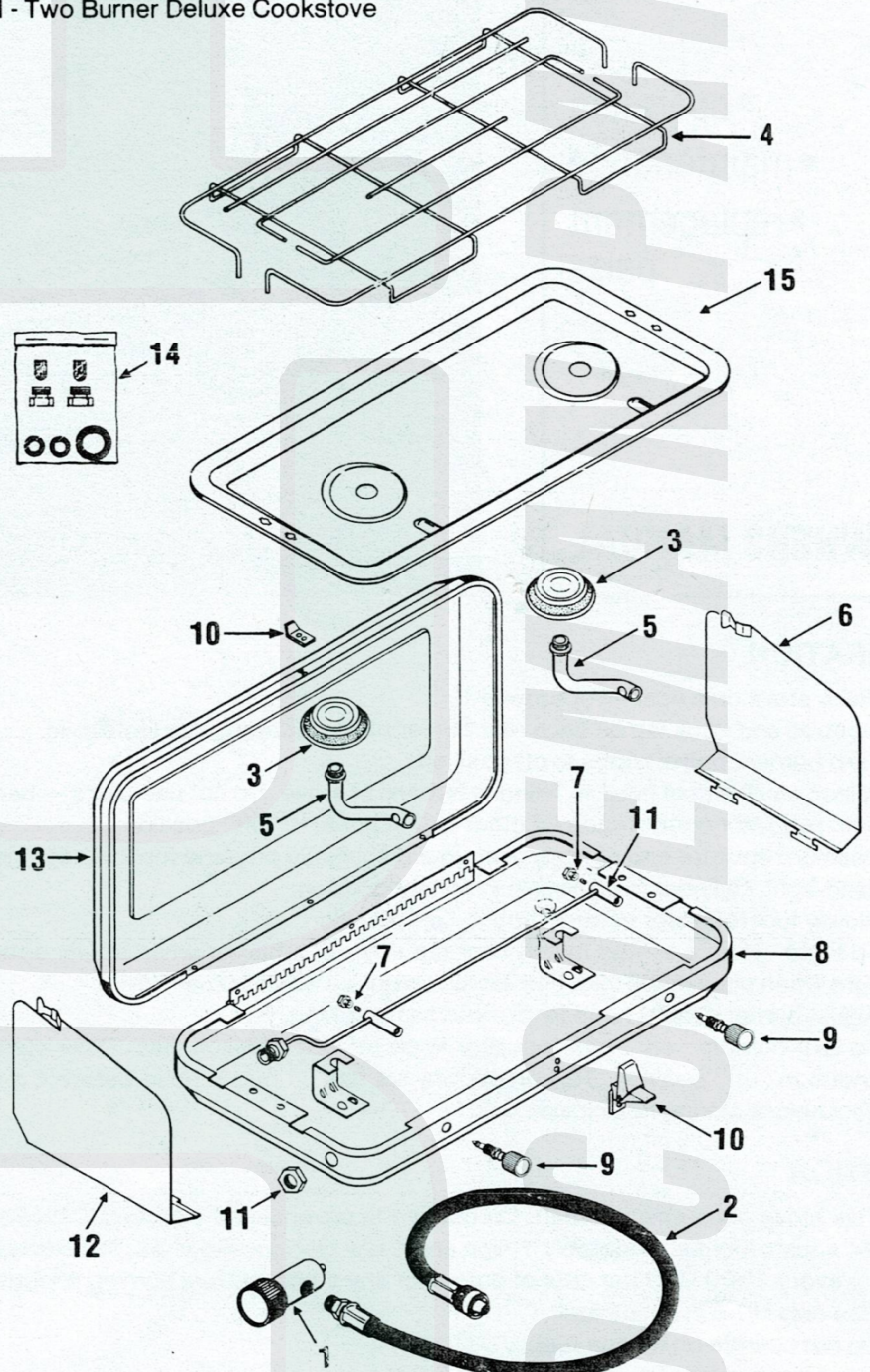
All parts listed herein may be ordered from SEARS, ROEBUCK AND COMPANY Retail and Catalog Store.

WHEN ORDERING REPAIR PARTS, ALWAYS GIVE THE FOLLOWING INFORMATION:

1. PART NUMBER
2. PART DESCRIPTION
3. MODEL NUMBER 920.727640
4. NAME OF ITEM - Two Burner Deluxe Cookstove

REPLACEMENT PARTS—MODEL 920.727640

KEY NO.	PART NO.	DESCRIPTION
1	5217-50	REGULATOR ASSEMBLY
2	5217-55	HOSE EXCLUDING REGULATOR
3	5207-20	LARGE BURNER
4	40-0961	GRID
5	26-1367	AIR MIXER TUBE
6	15-1362	RIGHT WINDSCREEN
7	40-0973	ORIFICE WITH FILTER
8	5227-10	BOTTOM ASSEMBLY
9	5217-20	ADJUSTMENT STEM ASSEMBLY
10	40-0988	LATCH GROUP COMPLETE
11	5217-10	MANIFOLD ASSEMBLY WITH NUT
12	15-1363	LEFT WINDSCREEN
13	24-1358	TOP COVER
14	5217-37	REPAIR KIT-orifices, filters, o-rings
15	24-1360	DRIP TRAY



45-0325
7711

Sears, Roebuck and Co. Chicago, Ill. 60684

Diagram Courtesy of
Roy Morris