

repair parts

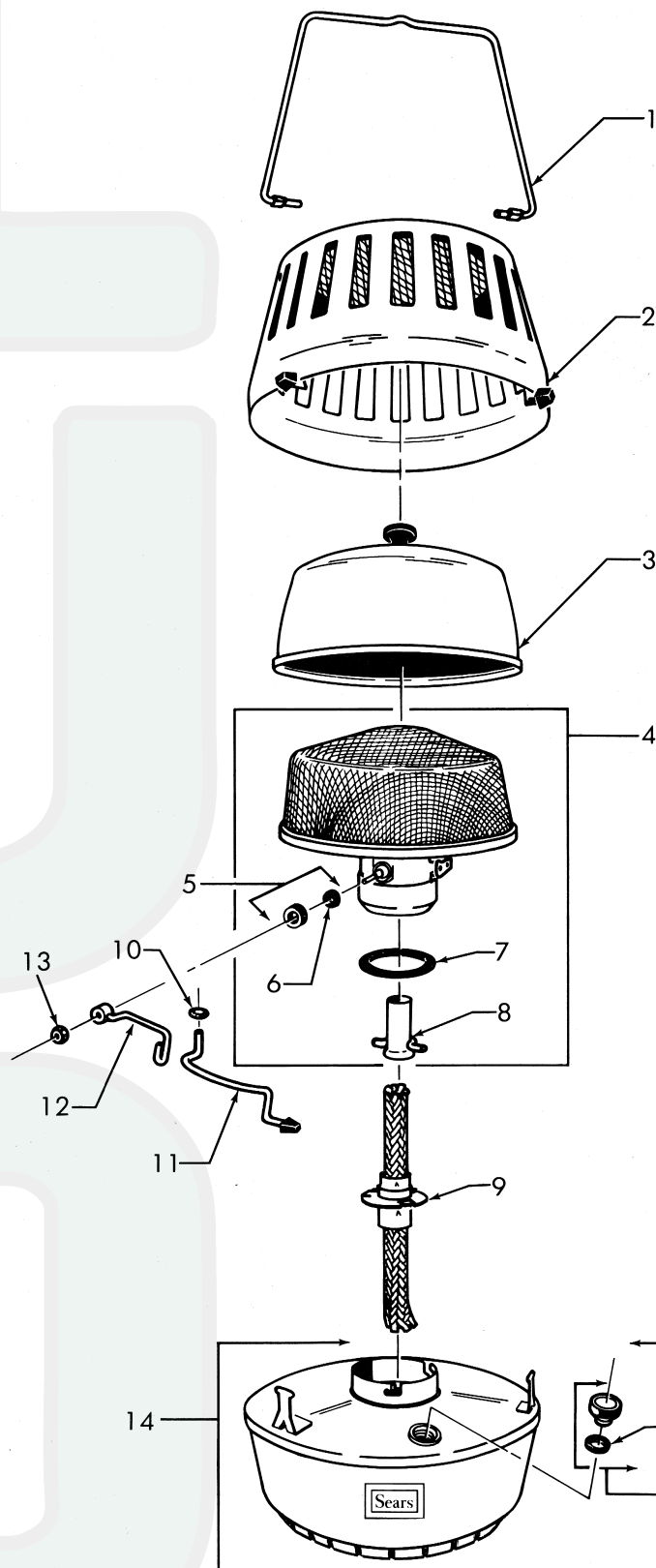
NEVER TRY TO REPEAT LIGHTING PROCEDURE UNTIL INITIAL PREHEATING FLAME HAS GONE OUT. Excessive flaming and burns could result.

NEVER FILL OR REFILL TANK NEAR OPEN FLAME OR OTHER SOURCE OF HEAT. The tank can be refilled while heater is burning once the preheating flame has gone out, however care should be used.

USE EXTREME CARE WHEN HANDLING STORING OR TRANSPORTING GASOLINE. Use only properly labeled containers. Gasoline is poisonous and extremely flammable. Its vapors are also toxic and can cause an explosion.

Model No. 476.72247

Key No.	Part No.	Description
SEE BACKPAGE FOR ORDERING INFORMATION		
1.	513-2501	Bail
2.	469-6291	Canopy Assembly
3.	513A6351	Snuffer
4.	513A6081	Head Assembly
5.	515-1801	Cap and Gasket
6.	515-1641	Ball Gasket
7.	513A2771	"O" Ring
8.	513A682	Sleeve and Pin
9.	513-6561	Wick Assembly
10.	1201B717	Push Nut
11.	513-2801	Adjusting Arm Assembly
12.	513-6031	Crank Assembly
13.	1201C703	Pal Nut
14.	469-6601	Fount Assembly
15.	469-1401	Filler Plug
16.	513-2531	Filler Plug Gasket
	1960E099	Customers Instruction Manual



GUARANTEE

This Sears camping heater is guaranteed for one year from date of purchase against mechanical defect. Sears cannot be responsible for damage to wick or head due to use of improper or contaminated fuel.

SEARS, ROEBUCK AND CO.
Chicago, Illinois 60607